



[www.BeSoji.com](http://www.BeSoji.com)



# ACCIDENT HISTORY YELLOW BOOK

BESOJI FZ-LLC,  
IN5 TECH, MEDIA CITY

+971 56 817 8171  
HELLO@BESOJI.COM

**Date**

Tuesday, June 4, 2024

**Time**

09:00 AM

**Vehicle Details****Make**

PORSCHE

**Model**

944 Turbo

**Year**

1986

**Engine Size**

4-Cylinder

**Mileage (KM)**

149268

**Fuel Type**

Petrol

**Regional Specs**

American

**Transmission**

Manual

**Interior**

Leather

**VIN Number**

WP0AA0953GN152822

**Number of Keys**

2

**Spare Tire**

Not Available

# Engine

## Engine Upper Cover

Pass

## Drive Belt / Pulleys

Noise detected

## Hoses & Pipes

Wear

## Bonnet Hinge & Holder

Pass

## Engine Oil Level

Low

## Engine Oil Filler Cap

Pass

## Coolant Level

Low

## Coolant Cap

Pass

## Engine Idle

Rpm fluctuations available

## Fender Liners

Pass

## Battery Condition



## Hose Damage Fault - Photo



IMG\_20240604\_103939.jpg



IMG\_20240604\_104003.jpg



[IMG\\_20240604\\_104011.jpg](#)

**Oil Level Fault - Photo**



[IMG\\_20240604\\_103714.jpg](#)

**Coolant Level Fault - Photo**



[IMG\\_20240604\\_103920.jpg](#)

# Electrical System

## Key Remote

N/A

## Windows Operation

Pass

## Center Console Buttons

Pass

## A/C Control & Cooling

Pass

## Cameras

N/A

## A/C Grilles

Pass

## Starting & Ignition System

Pass

## Brake Lights

Pass

## Headlights

Pass

## Fog Lights

Pass

## Indicators & Hazards

Pass

## Sunroof / Moonroof

Pass

## Interior Lights

Pass

## Rear View / Side Mirror Electricals

Pass

# Brake System & Tyres

## Brake Discs Front

Pass

## Brake Discs Rear

Pass

## Handbrake

Pass

## ABS Sensors

Pass

## Rims

	Brand	Condition
Front Left	Original	Good
Front Right	Original	Good
Rear Left	Original	Good
Rear Right	Original	Good
Spare		

# Interior

## Roof Lining

Pass

## Rear View Mirror

Pass

## Armrest & Side Pockets

Pass

## Steering Wheel Upholstery

Wear& Minor damage

## Seats Upholstery

Wear

## Gear Lever

Wear

## Floor Mats

Pass

## Trunk Lining

Pass

## Dashboard

Pass

## Front Windscreen

Pass

## Rear Windscreen

Pass

## Doors

Minor damage

## Steering Wheel Fault



IMG\_20240604\_110146.jpg

## Seats Upholstery Fault



IMG\_20240604\_110141.jpg

## Gear Lever Fault





[IMG\\_20240604\\_110149.jpg](#)



[IMG\\_20240604\\_110641.jpg](#)

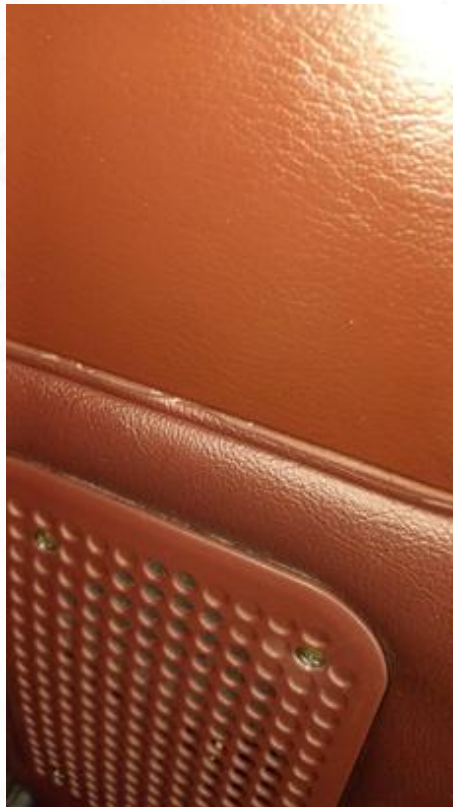
### Door Faults



[IMG\\_20240604\\_110603.jpg](#)



[IMG\\_20240604\\_110615.jpg](#)



IMG\_20240604\_110627.jpg

# Service History & Manuals

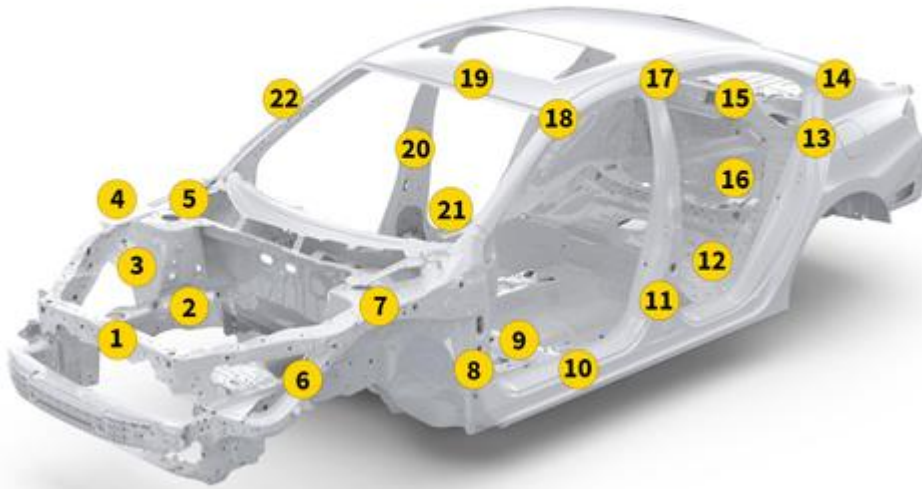
Service History

Available

User Manual

Available

## BeSoji Chassis Damage Report



Damage on Chassis / Subframe:

PASS

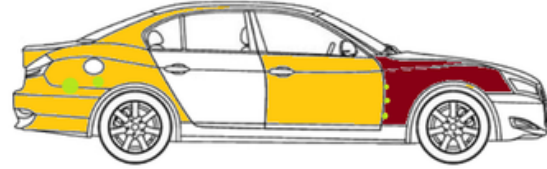
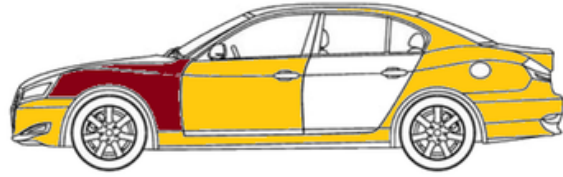
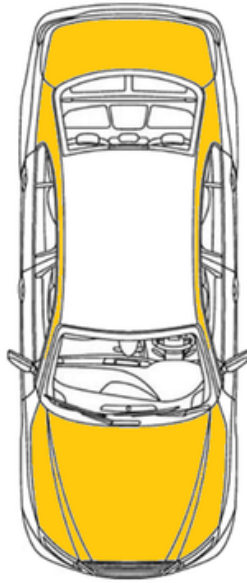
14

# Exterior Condition Report

## Paint Condition

**BeSoji**  
Exterior Condition Report

- Scratch
- Chip
- Dent
- Accident Paint
- Cosmetic Paint
- Faded



## Exterior Faults



WhatsApp Image 2024-06-04 at 12.40.3MG\_20240604\_104919.jpg



IMG\_20240604\_105201.jpg

# Vehicle Diagnostic Report

## Terms of Service

All services from BeSoji are provided on an "as is, with all defects" and "as available" basis without warranties of any kind, either expressed or implied, including without limitation, warranties of title, non-infringement, or implied warranties of merchantability or fitness for a particular purpose. Nothing in these terms or in any description of products or services in the services shall constitute a representation or warranty with respect to such products or services.

The inspection of the vehicle described in this report is external and we are unable to accept responsibility for failure to identify defects not present or apparent at the time of the inspection. Odometer readings may have been tampered with, although we report any signs that we notice of this happening during inspection. You acknowledge, by your use of the services, that such use is at your sole risk. In the event of dissatisfaction or a complaint, we reserve the right to re-examine the vehicle prior to any rectifications to the vehicle. You agree that BeSoji's liability is limited to refunding the price you pay for the inspection in the event you are dissatisfied with BeSoji's service, or injuries occur due to an unreported defect in the vehicle. All requests should be sent to [hello@besoji.com](mailto:hello@besoji.com) within 7 days notice of receiving the report.

in no event shall either BeSoji or its affiliates or agents be liable for any direct, indirect, punitive, incidental, special or consequential damages arising out of or in any way connected with the use of the services, whether based on contract, tort, strict liability or otherwise, even if advised of the possibility of any such damages.